

This news bulletin is brought straight to your desktop by the Concrete Repair Association (CRA). It provides brief and easy-to-digest updates on recent concrete repair developments, new advances and other initiatives occurring in the industry.

To obtain further information, click the relevant links below.

## **Metallisation protecting Anglesey's aluminium jetty**

CRA member, Brookes Specialist Contractors Limited, has recently completed a major anti-corrosion protection project, using Thermal Arc spray technology, to protect reinforced concrete beams on the Anglesey Aluminium Jetty in Wales. The offloading jetty is an essential asset for Anglesey Aluminium as it enables them to take delivery of raw materials directly into its UK aluminium processing facility. Being exposed to the harsh environment of the sea, the natural presence of salt had contaminated the concrete and caused corrosion of the steel reinforcing bars. Simple concrete repair would not have provided sufficient long-term protection so Brookes applied 'Asset Guard', a unique aluminium/zinc/indium anode, developed to provide electro-chemical protection for steel reinforced concrete structures. Application of the sacrificial surface treatment means that the coating itself will bear the attack, rather than the steel reinforcing bar.



[SEND AN EMAIL](#)

[LINK TO WEBSITE](#)

## **'BENTS' STRAIGHTENED OUT**

CRA member, Concrete Repairs Ltd (CRL), has completed a complex concrete repair and cathodic protection scheme on the M6 Ray Hall Viaduct; the elevated section of the M6 that crosses the M5 slip road near Walsall, in the West Midlands. The project included the repair of seven unsupported reinforced concrete crossbeam, panel walls and columns, known as 'bents', which form part of the substructure supporting the longitudinal steel beams and deck slab of the viaduct. Repairs involved the employment of hydro-demolition preparation techniques, reinstatement using flowable repair concrete, strengthening of one bent and the installation of a Cathodic Protection (CP) system. The restoration of each bent was carried out in a strict sequence of small repairs. On traditional contracts the repairs would be considerably larger with the temporary supports protecting the structure.



[SEND AN EMAIL](#)

[LINK TO WEBSITE](#)



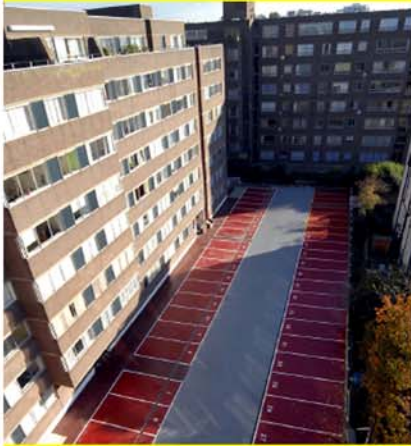


## **TOP COATS ELIMINATED WITH NEW RENOCON WATERPROOFING SYSTEMS**

In line with the company's ongoing policy of introducing new technologies, CRA member Renocon Ltd has launched two new systems developed by DWS (Deutsche Waterproofing Systems), one of Europe's largest waterproofing and liquid roofing system manufacturers. The new waterproofing systems are based upon a range of polyurethane liquid membrane and polyurea coatings, which have the added advantage of not requiring top coats. They are fully compatible with all types of traditional roofing methods, as well as existing waterproofing membranes. The systems are fully compliant for the roofing, waterproofing, car parks and marine environments and strengthen the external façade package supplied by Renocon.

[SEND AN EMAIL](#)

[LINK TO WEBSITE](#)



## **CEMPLAS 'BRIGHTON' UP CAR PARK**

CRA member, Cemplas Waterproofing & Concrete Repairs Ltd, has completed the refurbishment of a leaking asphalt podium deck forecourt, above an underground car park in Brighton, for the Adenstar Group. The worn, cracked and leaking deck was the cause of water penetration into the car park beneath. The project required the removal of the asphalt, the reinstatement of a screed to falls and the application of a new waterproof decking system. Working in conjunction with the Hemsley Orrel Partnership, Cemplas were supplied with a specification to apply the Sikafloor 350 elastomeric car park waterproofing system to the podium deck. In addition, Cemplas also reinstated the perimeter construction joints and undertook the line marking of the car park bays.

[SEND AN EMAIL](#)

[LINK TO WEBSITE](#)



## **THE FUTURE IS BRIGHT - ON!**

CRA member, Structural Renovations Ltd, has successfully carried out stabilising work on decorative Victorian lamp posts at Brighton Seafront, using a Sika Ltd (another CRA member) resin. Over the years some of the top spigot sections had worked loose within the bottom socket section of each post and required 'tightening up'. This was achieved by drilling through the cast iron base into the gap and injecting with Sika Rail KC330, a 2-part flexible resin normally associated with stabilising track in the rail industry.

[SEND AN EMAIL](#)

[LINK TO WEBSITE](#)



## WEBER TO BUILD NEW PRODUCTION UNIT IN TELFORD

Construction materials manufacturer Weber has commissioned the building of a state-of-the-art production and warehouse facility in Telford, Shropshire – with completion scheduled for summer 2008. The eight-acre site will initially accommodate a 5,500m<sup>2</sup> factory designed to output 80,000 tonnes of facade renders and tiling adhesives annually. This is in addition to Weber's existing manufacturing sites which will remain fully operational. The design follows an architectural and technical template already employed by Weber in other European countries and will include the iconic 33m high round production tower. "The new facility will free up capacity in the Bedfordshire factory where our technical mortars will continue to be produced," says Kevin Medhurst, Plant Manager. "This is only the first stage of our UK expansion plans in what will undoubtedly be Weber's flagship plant." The BREEAM certified factory is designed to meet the most stringent emissions criteria.

[SEND AN EMAIL](#)

[LINK TO WEBSITE](#)

**NB:** If you do not wish to receive future CRA 'News Bulletins', please advise by clicking this link [cra@associationhouse.org.uk](mailto:cra@associationhouse.org.uk)

## CONCRETE REPAIR ASSOCIATION

Tournai Hall, Evelyn Woods Road, Aldershot, Hampshire GU11 2LL

Tel: 01252 357835 Fax: 01252 357831 Email: [admin@cra.org.uk](mailto:admin@cra.org.uk) Web site: [www.cra.org.uk](http://www.cra.org.uk)